



Case Study Profile

DISTRICT: Saugus Union School District

EDUCATOR: Ruby Ramirez, Child Development Programs

GOALS: Integrate STEM education into the district's 15 afterschool sites.

Using ELO-P Funding to Expand Afterschool STEM Learnings

In 2021, the California Department of Education established the Expanded Learning Opportunities Program (ELO-P) into law to provide funding for comprehensive afterschool and expanded learning opportunities for students within the state. The intent of this program is to help students develop their academic, social, emotional, and physical needs through hands-on and engaging learning experiences.

In 2023, the Saugus Union School District decided to use funding from ELO-P to expand STEM learnings into their 15 afterschool sites located throughout the district. Ruby Ramirez from the Child Development Programs (CDP) department says that equitability was an important driving force and ELO-P funding helped guarantee that all 15 sites have access to the same equipment, materials, and curriculum.

When selecting STEM equipment, it was important for Ruby's department to make sure that those products met their defined afterschool components including art, literacy, math, science, and social emotional learning applications. Additionally, the programs try to utilize outdoor spaces as much as possible, so it was important to select equipment that could be used both indoor and outdoor.



MazeRun™ Ball Maze



MathemActive™ Giant Soma Puzzle

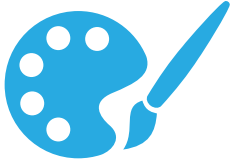
After making a purchase with STEM Supplies, Ruby and her colleagues got right to work implementing the products into their afterschool and summer programs. First, they scheduled several professional development workshops with their afterschool staff so that everyone could feel comfortable using the supplies in a way that aligns with their programming goals. For example, the staff used the MathemActive™ Giant Soma Puzzle as a team building activity as well as a math lesson. The product is now both a staff and student favorite!

In the next 3-5 years, Ruby hopes that they can keep developing and growing their expanded learning programs. She encourages the afterschool staff to be cross disciplinary in their approaches when using STEM education tools. The unique products offered by STEM Supplies help staff to think outside of the box when preparing lessons and allow students to learn STEM concepts while expanding their social, emotional, and physical skills.

Contact us today!

stem-supplies.com | orders@stem-supplies.com | 855-826-4540

District's Learning Objectives



Art



Literacy



Math



Science



Social Emotional Learning

STEM Solutions Implemented



MathemActive™ Giant Soma Puzzle



STEM Sports®



TowerTest™



CodingCourse™



MazeRun™ Ball Maze



Keva Planks

Ready to start your STEM journey?

Whether you're a STEM veteran or new to STEM teaching, we're here to help. STEM Supplies was founded to create turn-key solutions that focus on real-world applications of STEM fields through hands-on and inquiry-based methods. We're here to provide you the best teaching and learning experience for classrooms, makerspaces, afterschool programs, summer camps, and everything in-between.

Contact us today!

stem-supplies.com | orders@stem-supplies.com | 855-826-4540